

Historypin: A community archive for activists

Feb 2015, Civic Epistemologies, Leuven

Breandán Knowlton
Executive Director
@bfk | @historypin





**Story Of Historypin
Use And Value Of The Centenary Hub
Reflections On Roadmap**

Why Historypin?

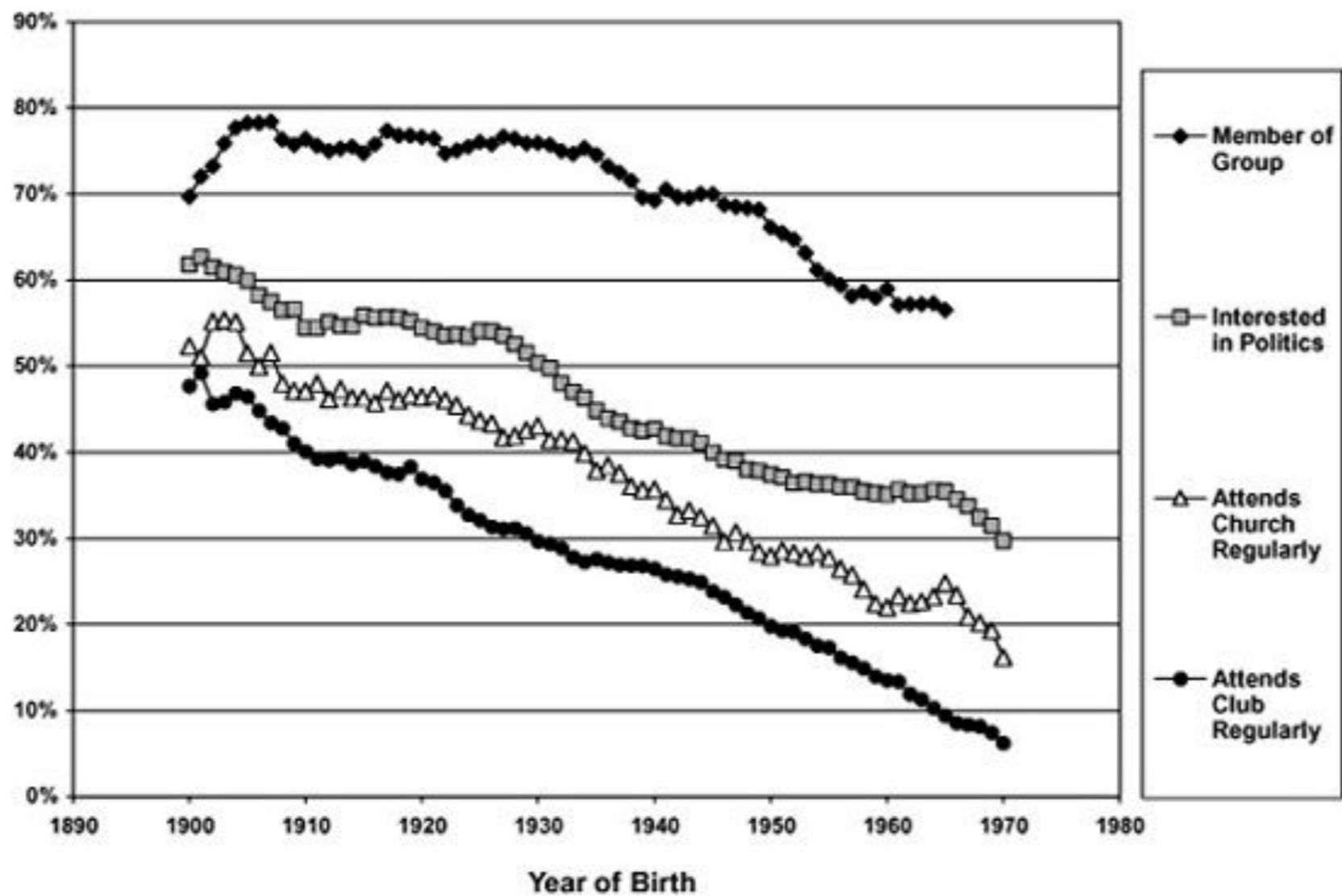
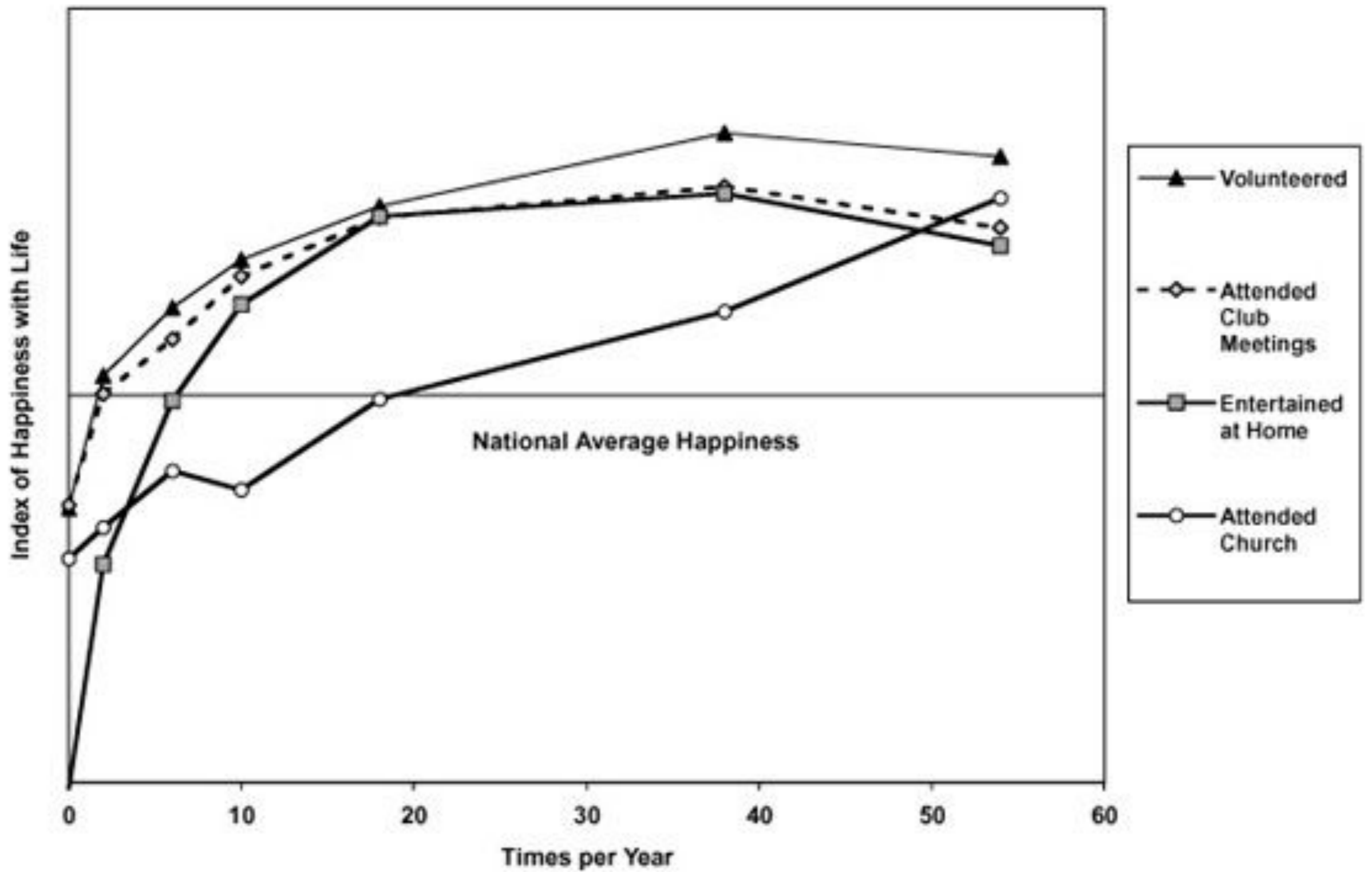
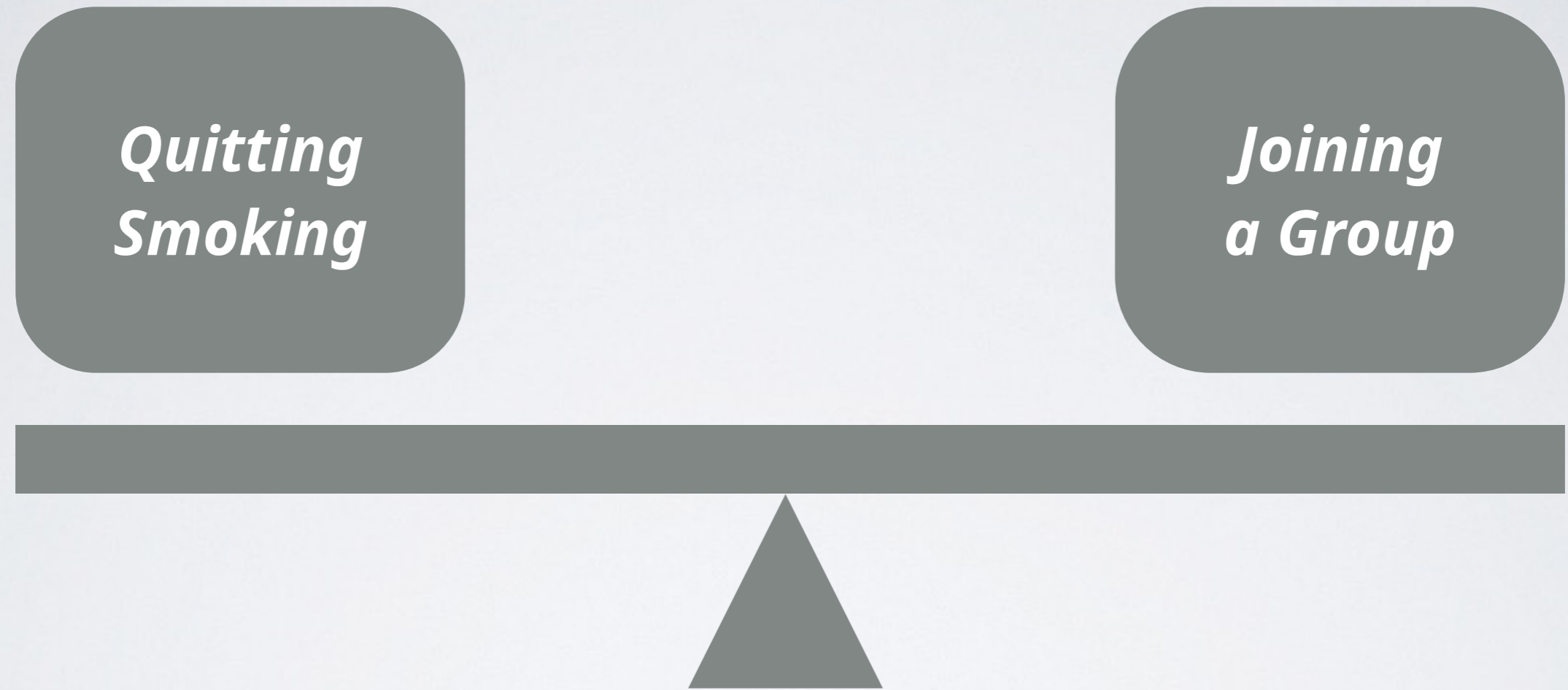


Figure 71: Generational Trends in Civic Engagement (Education Held Constant)

Civic Engagement Is Declining



Engagement Enhances Happiness



Engagement Enhances Well-Being

We Believe That

Actor

+

Action

=

Impact

Local people

Sharing stories about a shared place

Build stronger local connections



First World War Hub

First World War Centenary

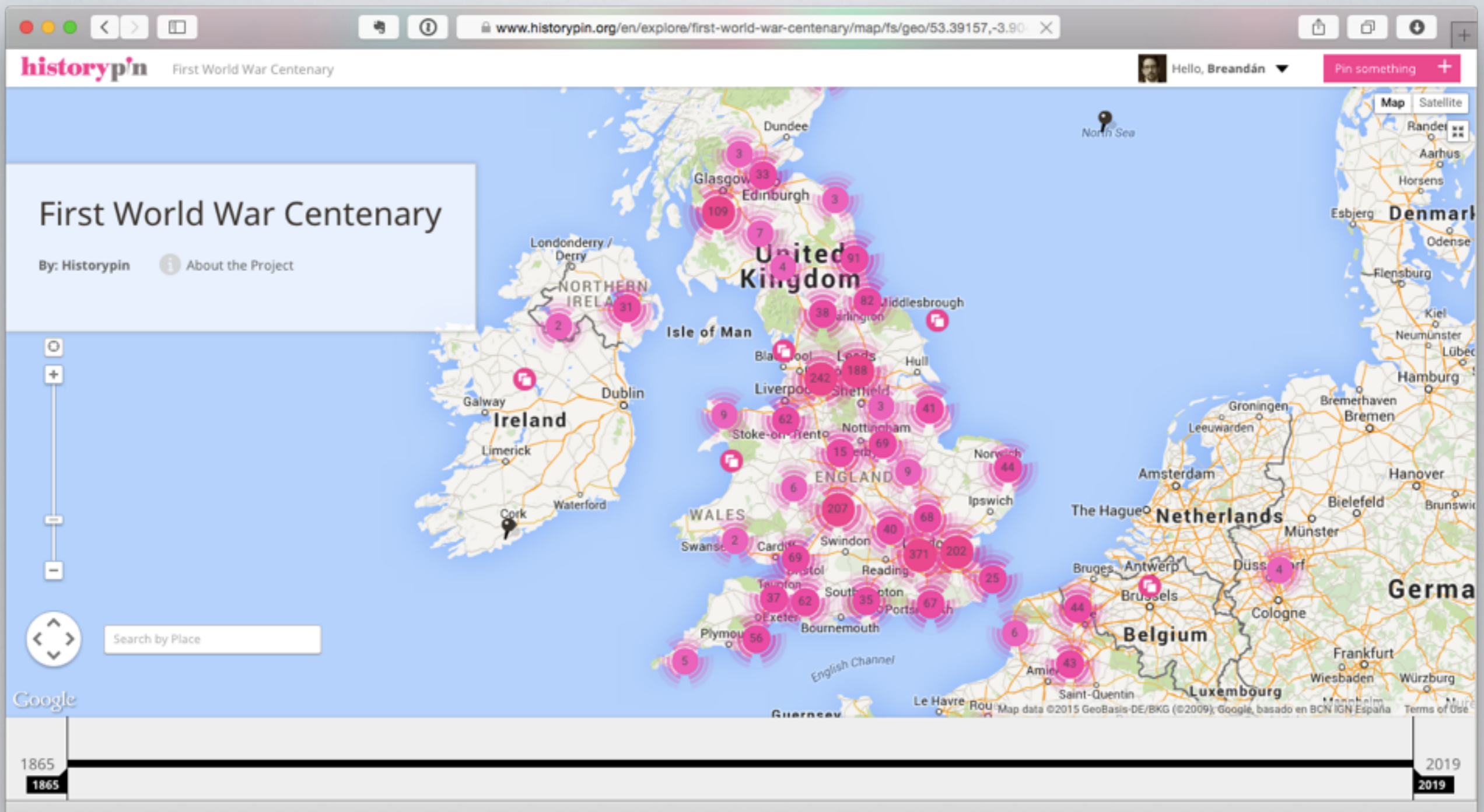
Explore how communities are investigating and commemorating the impact of the First World War.



In partnership with



Use And Value



285 local FWW projects - an incredible diversity
(264 HLF grantees)

Projects & Pins

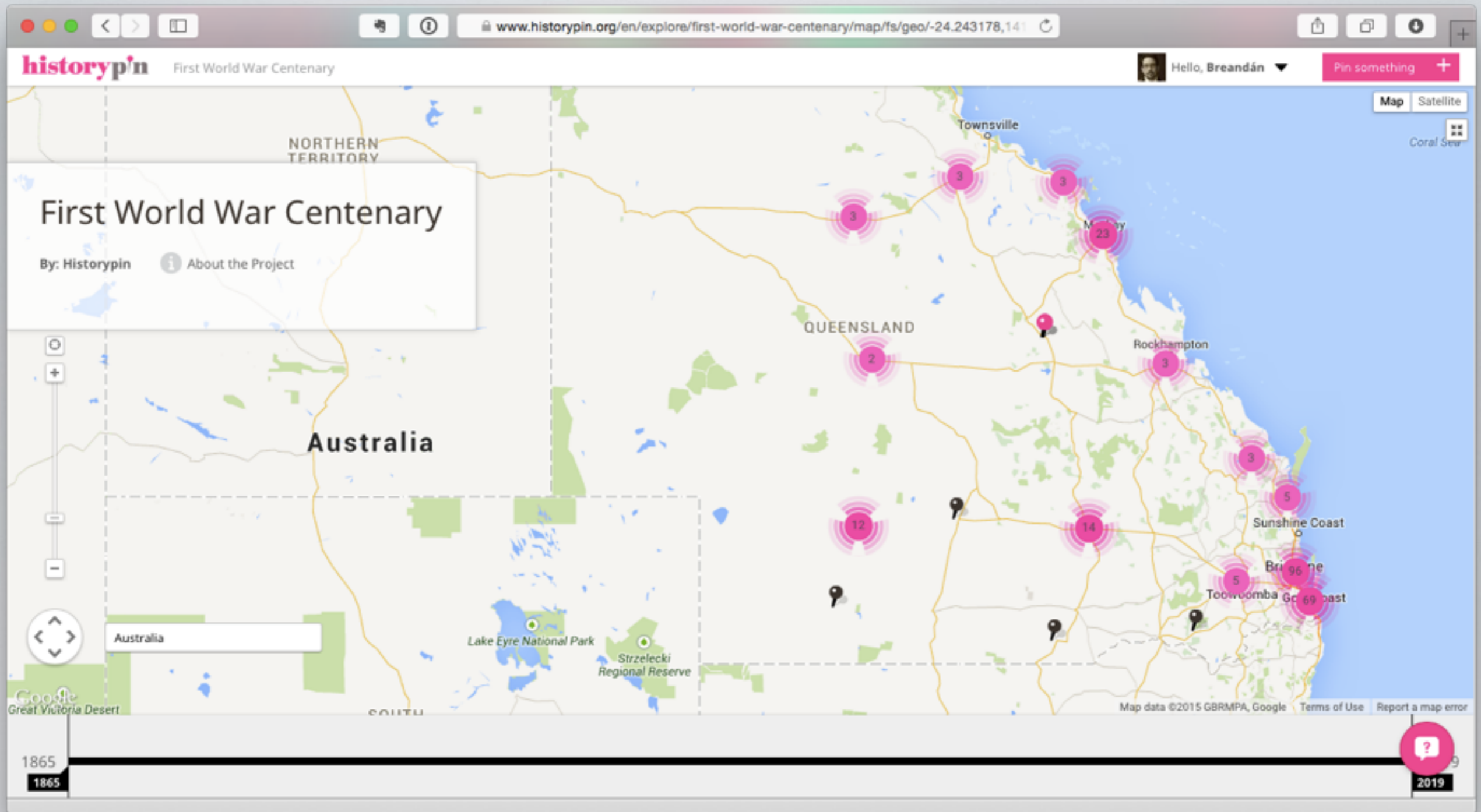
2,593 pins

70/30% contemporary/historical material

2,502 photos

67 videos

24 sound recordings



21 projects from ANZAC Australia and Canada

historypin First World War Centenary Gloucestershire Remembers WW1 Hello, Breandán Pin something +

Map Satellite Search SEARCH Reset Search sorted by: Date Added (recent first)▼

FIRST WORLD WAR CENTENARY
Gloucestershire Remembers WW1

By: Gloucestershire Remembers WW1 About

TOP PINNER

Gloucestershire Remembers ...

Welcome to the official Historypin profile for the 'Gloucestershire Remembers WW1' project, helping individuals, groups and communities explore and

Gloucestershire Remembers WW1

ALICE LEE WILLIAMS OBE

Mrs Alice Lee Williams of 'Tuffley Knoll', Gloucester was one of the first women to be awarded the OBE – women only became eligible for awards in the various

Favourite ?

1897 2014

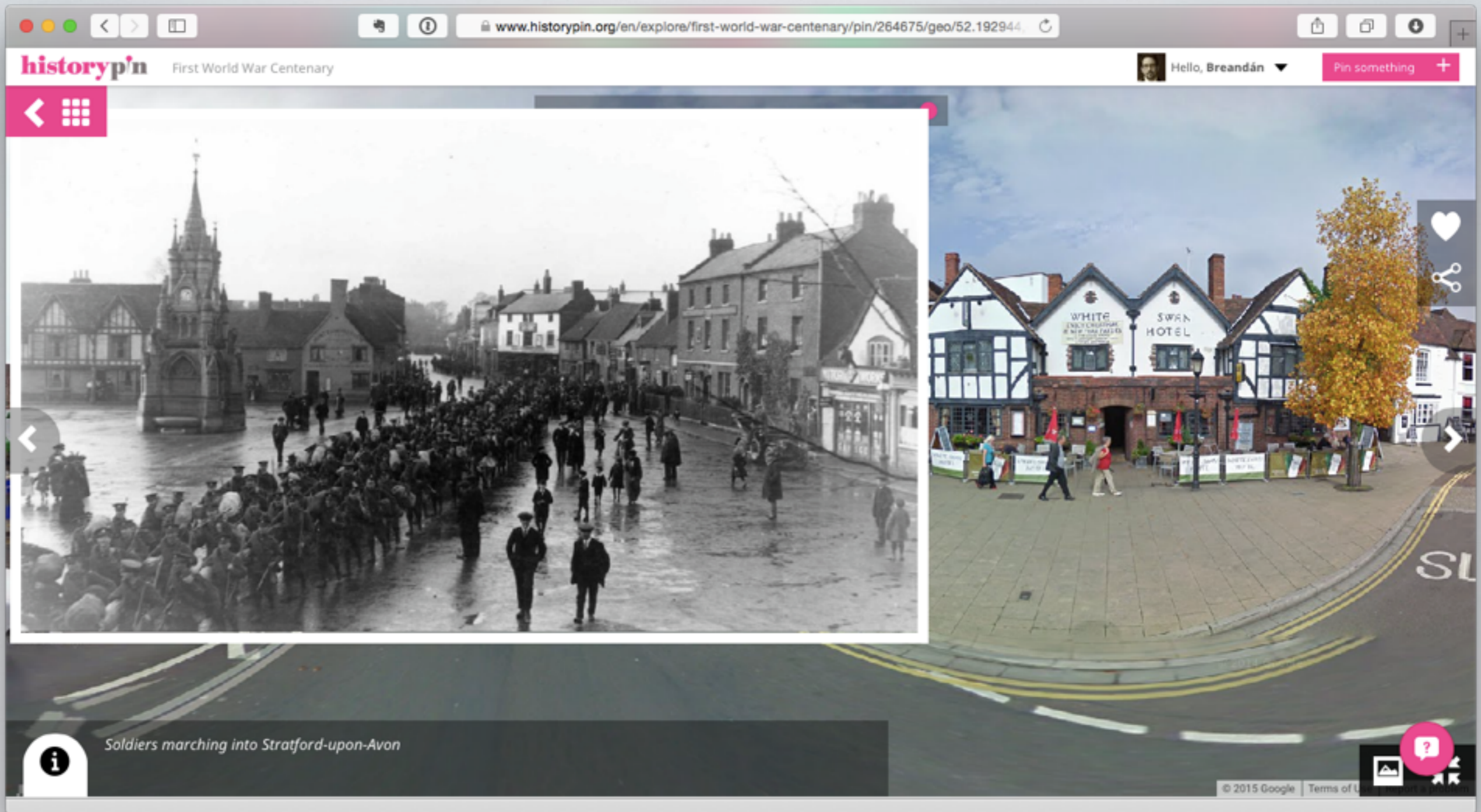
Centenary projects now have a permanent home on Historypin

Search projects and items by location

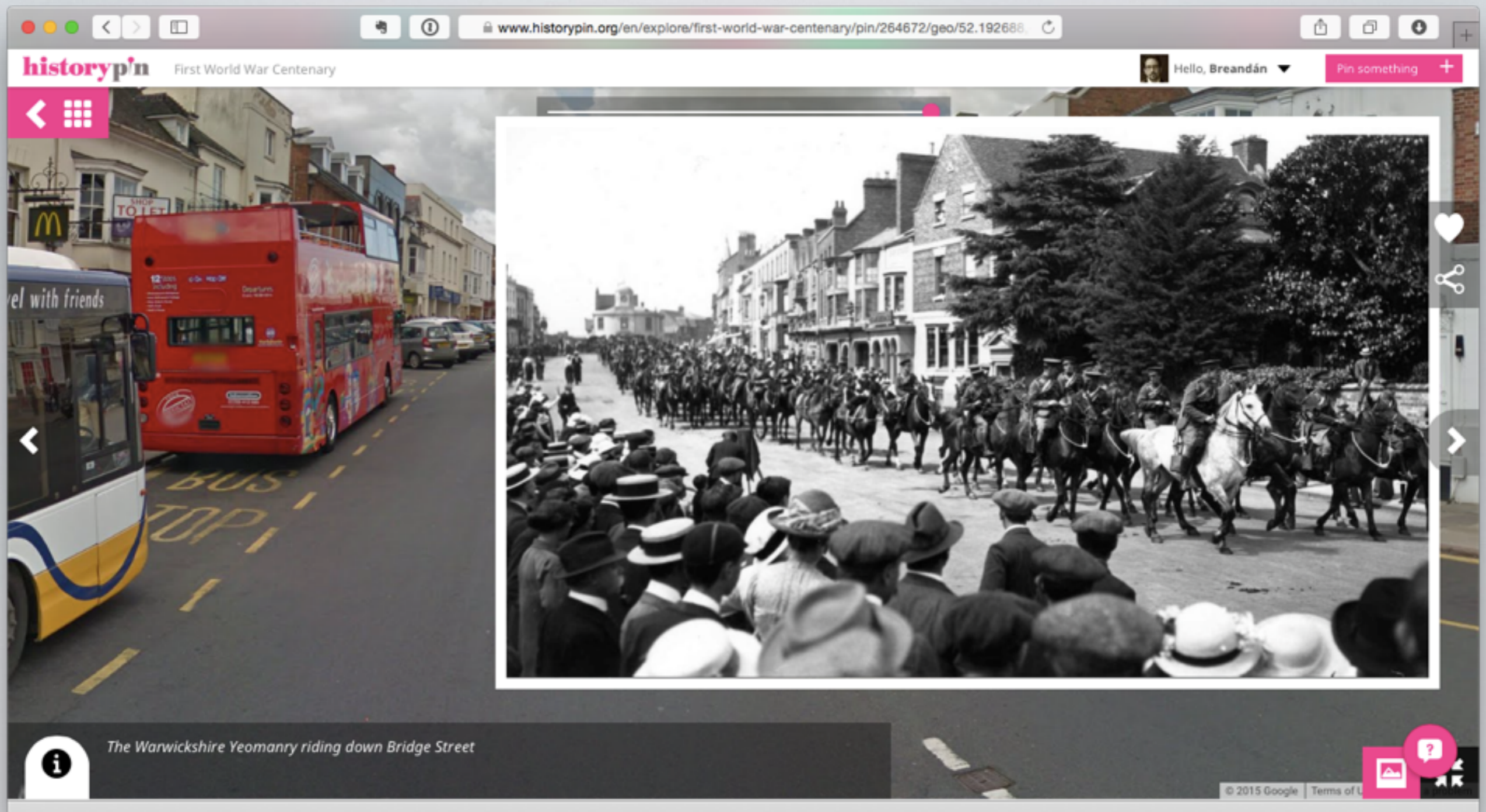
The screenshot displays a digital heritage platform interface. On the left, a map of the United Kingdom is overlaid with numerous pink circular markers, each containing a number representing the count of projects or items at that location. A red oval highlights the bottom-left corner of the map, which includes a search bar labeled "Search by Place" and navigation controls. The main content area on the right features a search bar at the top with the text "SEARCH", "Reset Search", and "sorted by: Date Added (recent first)". Below the search bar, two project detail cards are visible. The first card, titled "FIRST WORLD WAR CENTENARY Women's Work: Stories of th...", includes a circular icon with the text "women & theatre" and a description: "A heritage research project looking at the lives of female factory workers in Small Heath, Birmingham during WWI." The second card, titled "FIRST WORLD WAR CENTENARY Voices from the Front: A Per...", includes a circular icon with a classical building facade and a description: "A series of WWI community curated exhibitions exhibited at local community venues during the centenary period." Both cards feature a map snippet with a pink marker and a collage of photographs showing exhibition displays and people.

Search by "theme" or keyword

The screenshot displays the Historypin website interface. At the top left, the logo 'historypin' is visible, followed by 'First World War Centenary'. A search bar at the top center contains the text 'theatre', which is circled in red. Below the search bar, a dropdown menu shows 'theatre' as the selected search term. The main content area is divided into two columns. The left column features a map of the United Kingdom with numerous pink circular markers indicating pin locations. The right column displays two project cards. The first card is titled 'FIRST WORLD WAR CENTENARY Women's Work: Stories of th...' and includes a circular icon with the text 'women & theatre'. The second card is titled 'FIRST WORLD WAR CENTENARY Voices from the Front: A Per...' and includes a circular icon with a question mark. Both cards feature images of exhibitions and text descriptions. The bottom of the page shows a timeline from 1865 to 2019 and a URL: <https://www.historypin.org/en/explore/first-world-war-centenary/#>

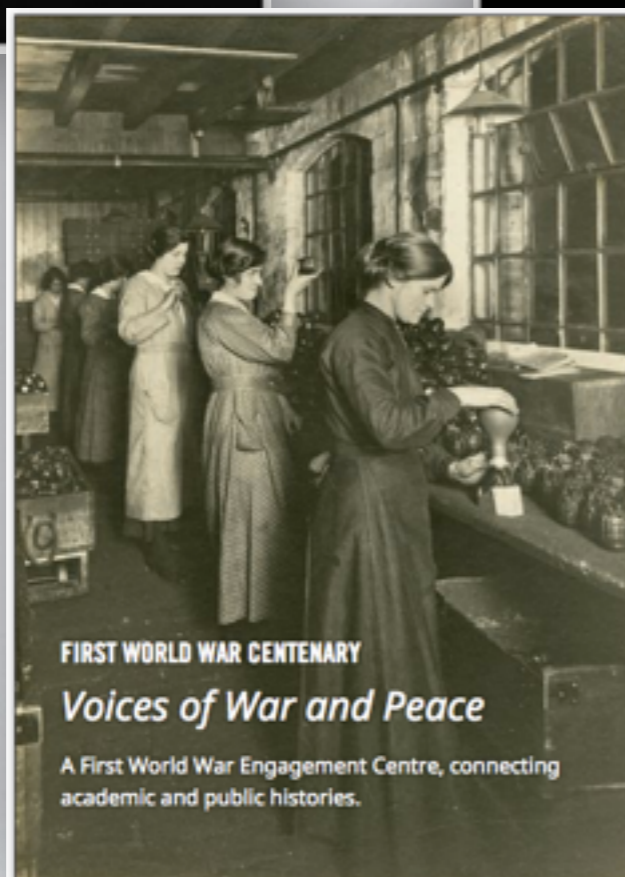
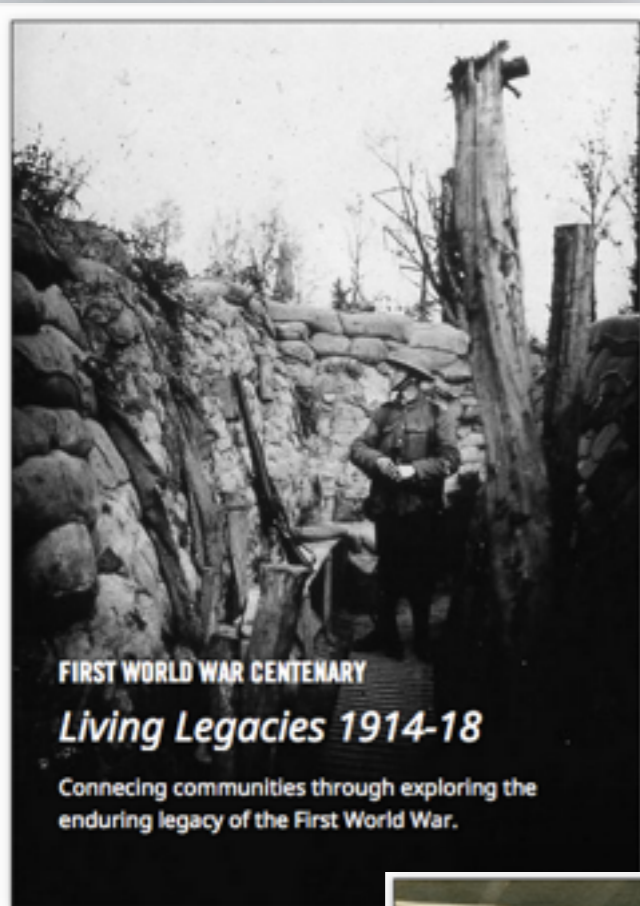


Incorporation of "Street View" creates some of the most interesting images



Posting old images really creates sense of "Then" and "Now"

Engagement Centres have their own homes



Community Projects are associated with these areas



VOICES OF WAR AND PEACE
No Game For Girls

VOICES OF WAR AND PEACE
Gas Girls

www.historypin.org/en/explore/first-world-war-centenary/gloucestershire-remembers

historypin First World War Centenary Gloucestershire Remembers WW1 Hello, Breandán Pin something

United Kingdom

FIRST WORLD WAR CENTENARY

Gloucestershire Remembers WW1

By: Gloucestershire Remembers WW1 the Project

Second-Lieut. P. Lloyd Elliott,
 1st Batt. Duke of Cornwall's Light Infantry,
 killed in action Oct. 20, 1914, aged 18
 years; second son of Mrs. Lloyd Elliott,
 of 2 Paragon-terrace, Cheltenham, and the
 late Capt. Gilbert Lloyd Elliott, D.C.L.I.
 and 13th Hussars, of Dolhaidd, Carmarthen-
 shire. He was educated at Cheltenham
 College and Sandhurst, and was gazetted
 to the D.C.L.I. on Aug. 15, 1914.

31 October 1914

1897 1897 2014 2014

Second-Lieut. P. Lloyd Elliott

Projects post documentary evidence relating to their areas



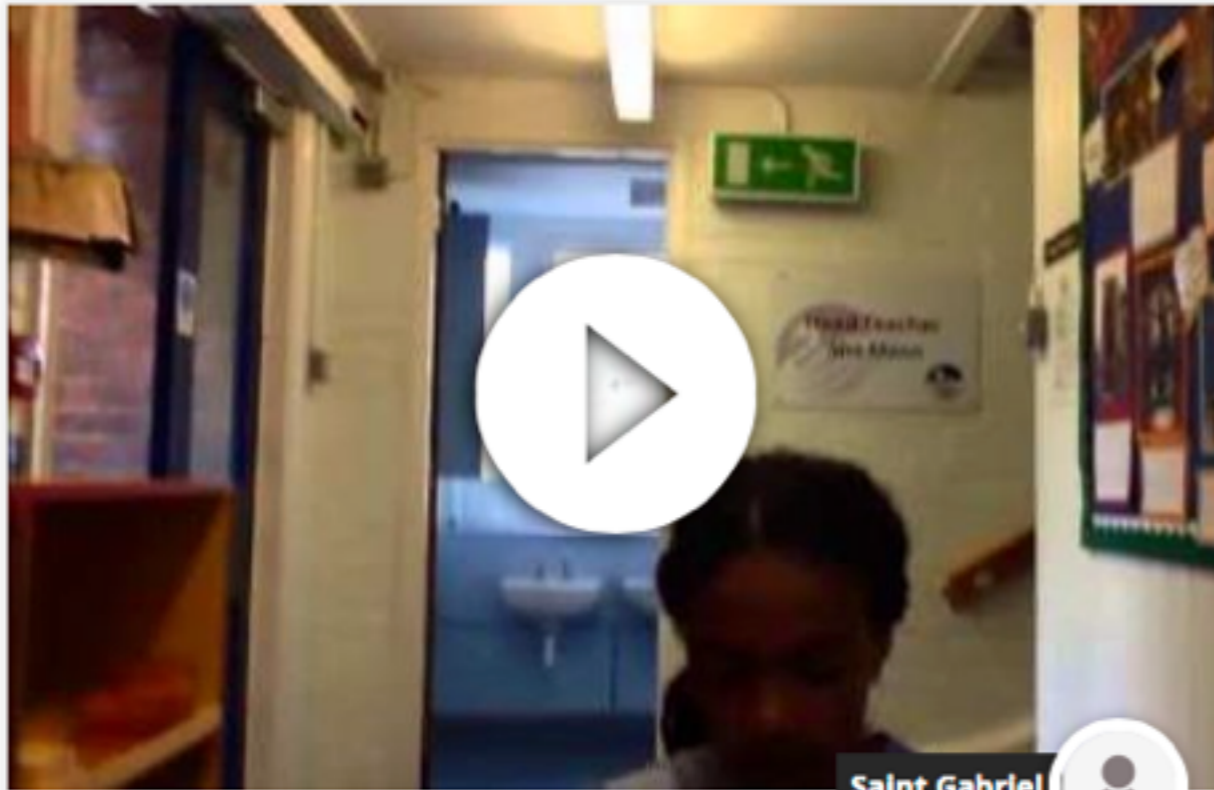
The wrecked Zeppelin shot down over Cuffley, Herts, 3rd September 1916

THE WRECKED ZEPPELIN, CUFFLEY, 3RD SEPT., 1916.

ROTARY PHOTO, E.C.



Old photography is particularly resonant



Saint Gabriel



SOLDIERS' STORIES: INVESTIGATING THE MEMORIALS OF ST GAB...

Percy Alexander James Matthews fi...

Year 5 pupils of Aldersbrook School describe their findings relating to Percival Matthews whose memorial plaque is on the wall of St Gabriel's Church

♥ Favourite



Saint Gabriel



SOLDIERS' STORIES: INVESTIGATING THE MEMORIALS OF ST GAB...

Reginald John Robins film

a film produced by year 5 pupils at Aldersbrook School researching Reginald Robins, a soldier whose memorial plaque is on the wall of St Gabriel's Church.

♥ Favourite

Adding video and media opens a more contemporary presentation of projects

Fred, Arthur and Ernest Smith

Fred, Arthur and Ernest Smith were born in 1893, 1895 and 1898 respectively at 3, Derby Street, Boothtown. They moved to 3 York Terrace, Ackroydon in the early 1900's along with their parents and siblings. Fred was a pre-war territorial and bandsman in the 4th Duke of Wellingtons Regiment . He went to France as part of the 49th(West Riding) Division on the 14th April 1915. They were heavily involved at Boesinge, near Ypres for much of the year. It was here that he suffered from 'Trench foot' being invalided home on 29th Dec 1915. He spent the rest of the war in England in a reserve battalion. Arthur joined up at the end of December in the R.F.A./R.H.A. and was mobilised on 14th January 1916. He served on the Somme 1916, at Ypres 1917 and around Cambrai in 1918. He spent a period of time in hospital suffering from the effects of gas. He was in the Army of Occupation in Germany until being de-mobbed in Oct 1919. Ernest was conscripted into the Leinster Regiment late 1916/early 1917 and after training was sent abroad. His battalion, the 2nd Leinsters, were in the first attacks of the 3rd Battle of Ypres, being wounded three times, before being rescued. After recovering in hospital he trained to be a signaller but never went back to the front. He was de-mobbed in February 1919. After the war Fred worked at Standevens Mill and was also caretaker at Belle Vue Library. Arthur also worked at Standevens and Scratcheds Mills before becoming post master at Stump Cross PO. Ernest emigrated to the USA and worked for Firths Carpets in New York.



24



0



Pinned by

Janette Martin,

...

DATE TAKEN

1916 - 1918

TAGS

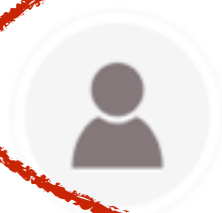
ADD A TAG

PIN METADATA



[Report this Pin](#)

SHARE YOUR COMMENTS AND STORIES



[ricksmith1012](#) said on 21 October 2014

From left to right :- Arthur Smith RFA/RHA, Fred Smith Duke of Wellington's Regt, Ernest Smith Leinster Regt. Arthur was my grandfather

Sometimes the community responds with text or identifications

The wrecked Zeppelin shot down over Cuffley, Herts, 3rd September 1916



16



0



Pinned by

Herts at ...

SHARE YOUR COMMENTS AND STORIES



PhotosOfThePast said on 23 October 2014

Technically not a zeppelin, but the Schutte-Lanz airship SL11 - more on this story at

SCHÜTTE-LANZ SL 11

The Schütte-Lanz SL 11 was a military dirigible airship built in Germany during 1916. == Operational history == The SL 11 was built by Luftschiffbau Schütte-Lanz and thus, was not classed as a Zeppelin. Based at Spich and commanded by Hauptmann Wilhelm...

DATE TAKEN

3 September 1916

TAGS

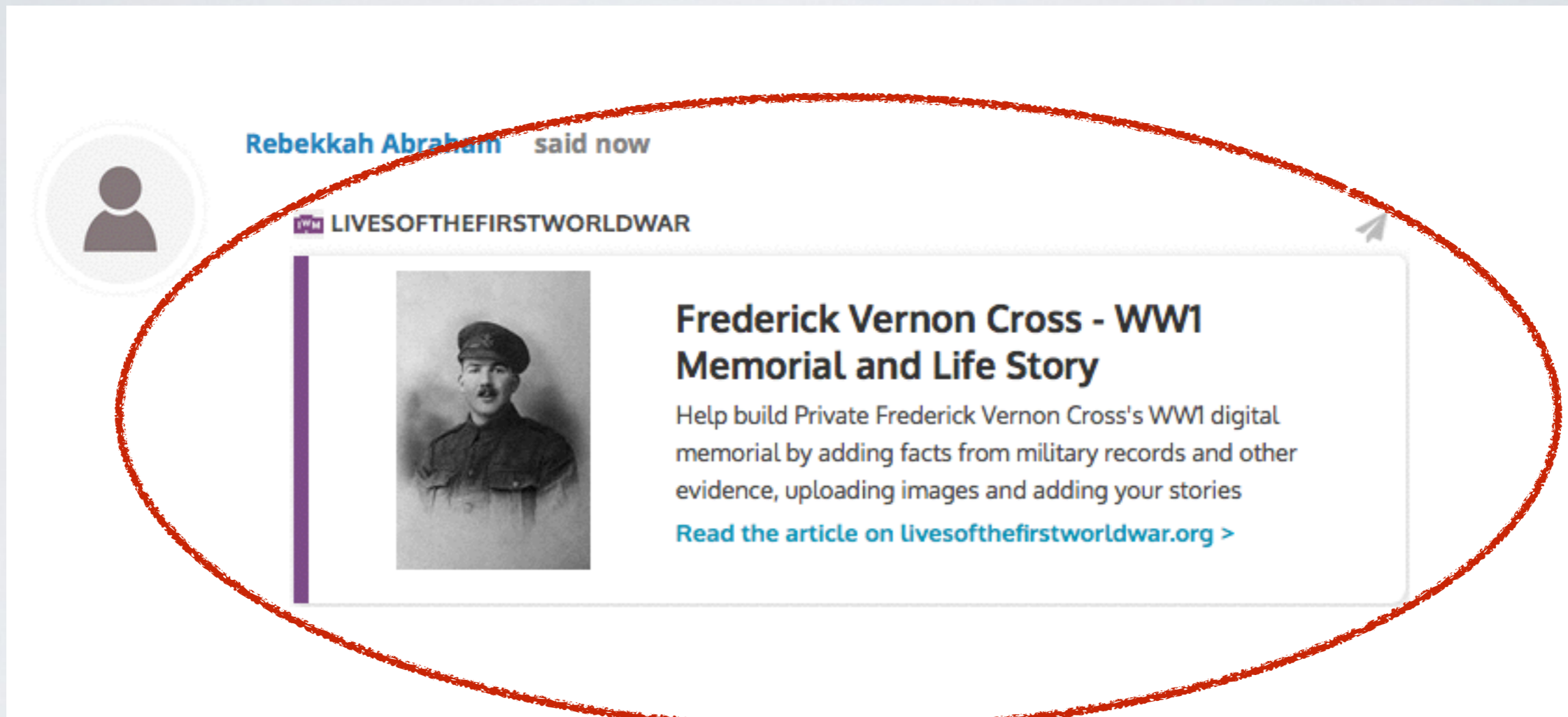
tag name

ADD A TAG

PIN METADATA

[Report this Pin](#)

The community responds with links to reference sites such as wikipedia, which Historypin displays as "cards"



A screenshot of a social media post. At the top left is a circular profile picture icon. To its right, the text reads "Rebekkah Abraham said now". Below this is a purple and white logo for "LIVESOFTHEFIRSTWORLDWAR". The main content is a card with a black and white portrait of a man in a military uniform on the left. To the right of the portrait, the text reads "Frederick Vernon Cross - WW1 Memorial and Life Story". Below this, it says "Help build Private Frederick Vernon Cross's WW1 digital memorial by adding facts from military records and other evidence, uploading images and adding your stories". At the bottom of the card is a blue link: "Read the article on livesofthefirstworldwar.org >". A hand-drawn red oval highlights the entire post content.

Responses include links to Lives of the First World War, also rendered as "cards" on Historypin

Legion of Frontiersmen from Cheltenham

A group of Cheltenham men leaving the recruiting office in March 1915, after joining the Frontiersmen for active service in East Africa.

56
0



Pinned by

Gloucestershire Remembers ...

SHARE YOUR COMMENTS AND STORIES



neela.mann said on 17 November 2014

I wonder where these men were going and why. Does anyone know?



A Sentimental ... said on 08 December 2014

My guess: The 1/1st Royal Gloucestershire Hussars fought in Egypt and Gallipoli, leaving around April 1915. The men in the photo are stated to be 'Frontiersmen'; the Legion of Frontiersmen was a British paramilitary unit before WWI that trained men for service in case of war, they were probably members of the Frontiersmen who volunteered for service with the Royal Glos. Hussars.



Gloucestershire Remembers ... said on 09 December 2014

Many thanks for your questions and thoughts on this, both. We only had the short paragraph that was in the Cheltenham Chronicle and Gloucestershire Graphic, which didn't give us much in the way of detail. It's good to know more about where these men might have been heading, and why. Best wishes, GRWW1

DATE TAKEN

1915

TAGS

WW1

Cheltenham

recruitment

Frontiersmen

East Africa

Tag name

ADD A TAG

PIN METADATA

Report this Pin

Occasionally these responses generate give-and-take between project and audience

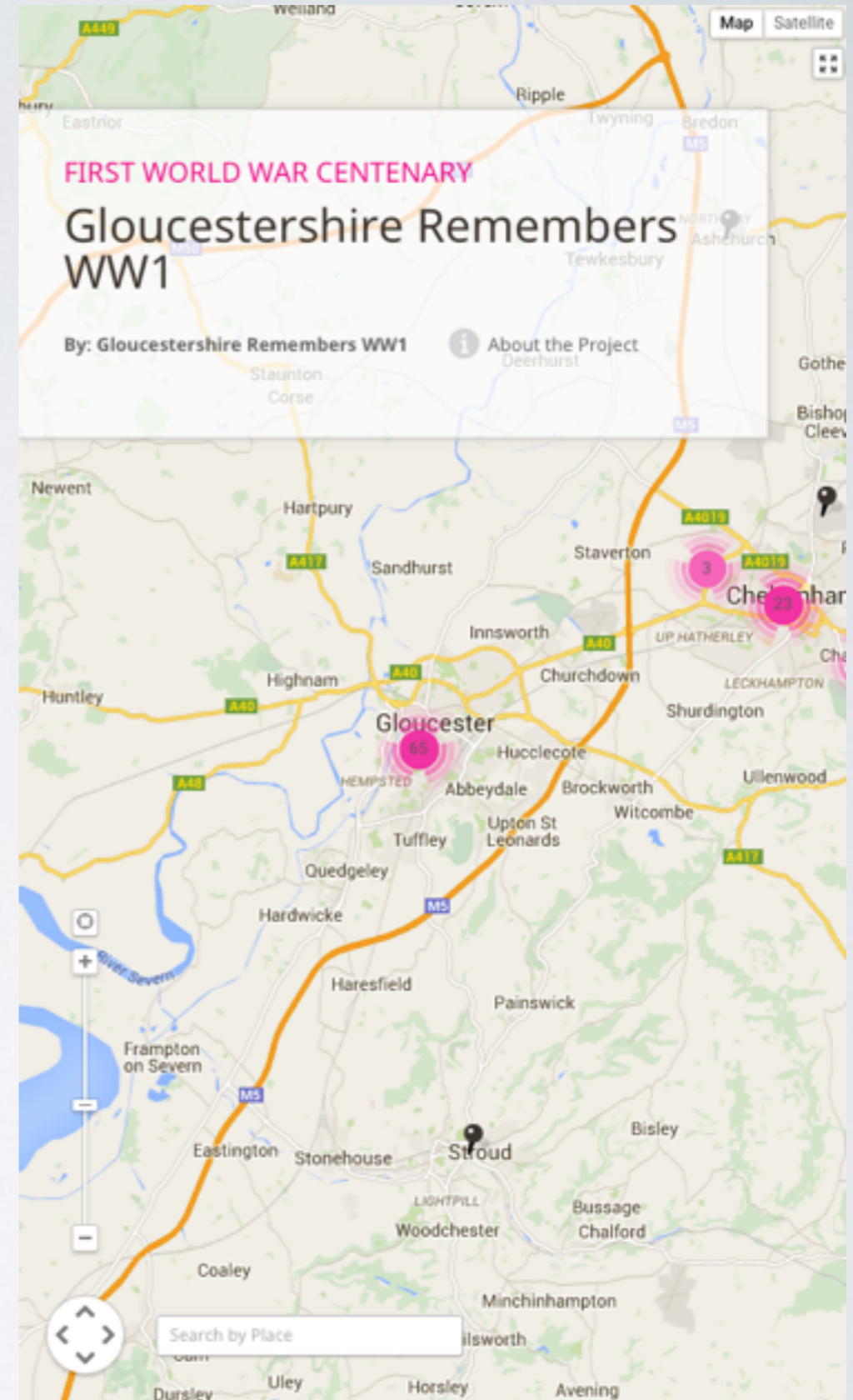
Value to Projects

Audiences are **discovering** the projects.

People around the world are **contributing & participating**.

Projects are **related** to each other in the Centenary context.

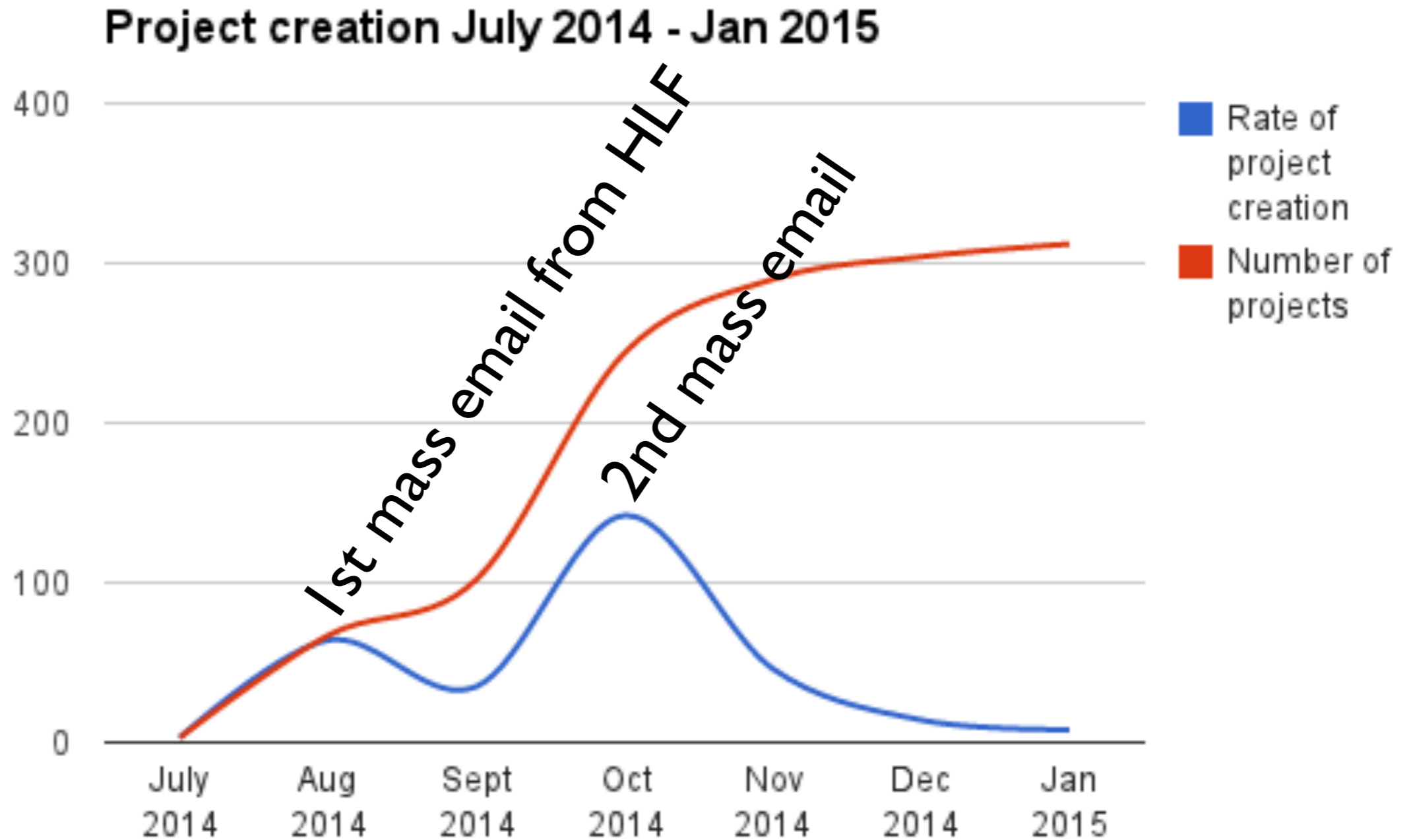
Projects seeing value are those with the **willingness to engage communities via a digital tool**.



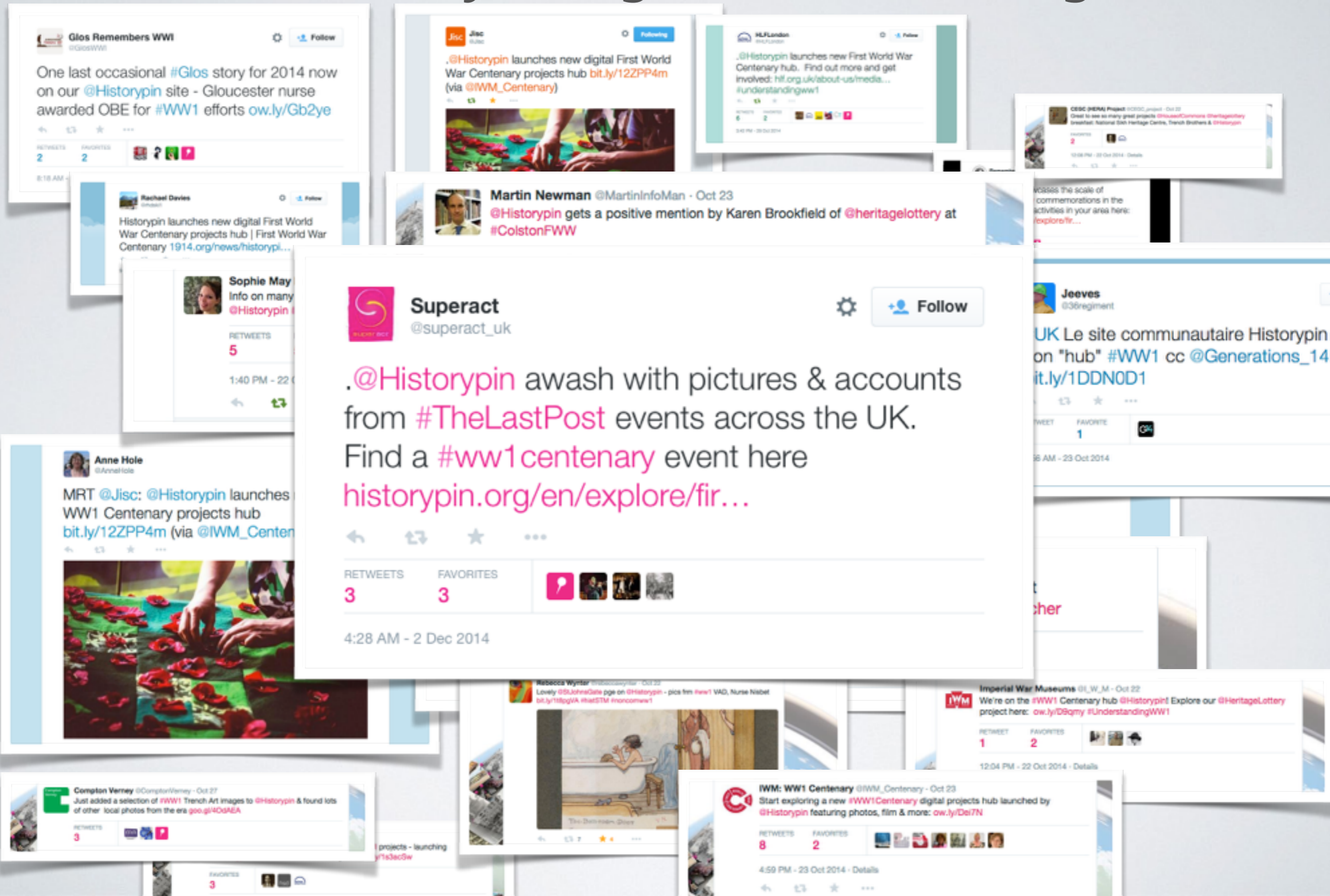


Insights From The Hub

1. Project Creation Is Driven By Outbound Comms.



2. Social Media Plays A Big Role In Attracting Visitors



3. Community Support Is Needed

150 conversations were held between Historypin and grantees

- via Intercom (in-app communications)
- email
- telephone

Roughly 50% of grantee projects required some level of personal support in setting up and populating their projects.

We saw a substantial drop in support requests (50%) after usability improvements to project creation.

Roadmap Reflections

Roadmap

- Citizen Science
- Accessibility
- Infrastructure
- User Experience



Thank You!

@Bfk

@Historypin