

# Digital Research Infrastructures for the Arts and Humanities (Rise and Fall)

*Chris De Loof (Belspo)*

*CIVIC Epistimologies*

*KULeuven (Belgium)*

*20 February 2015*

*(version 20/2/2015)*

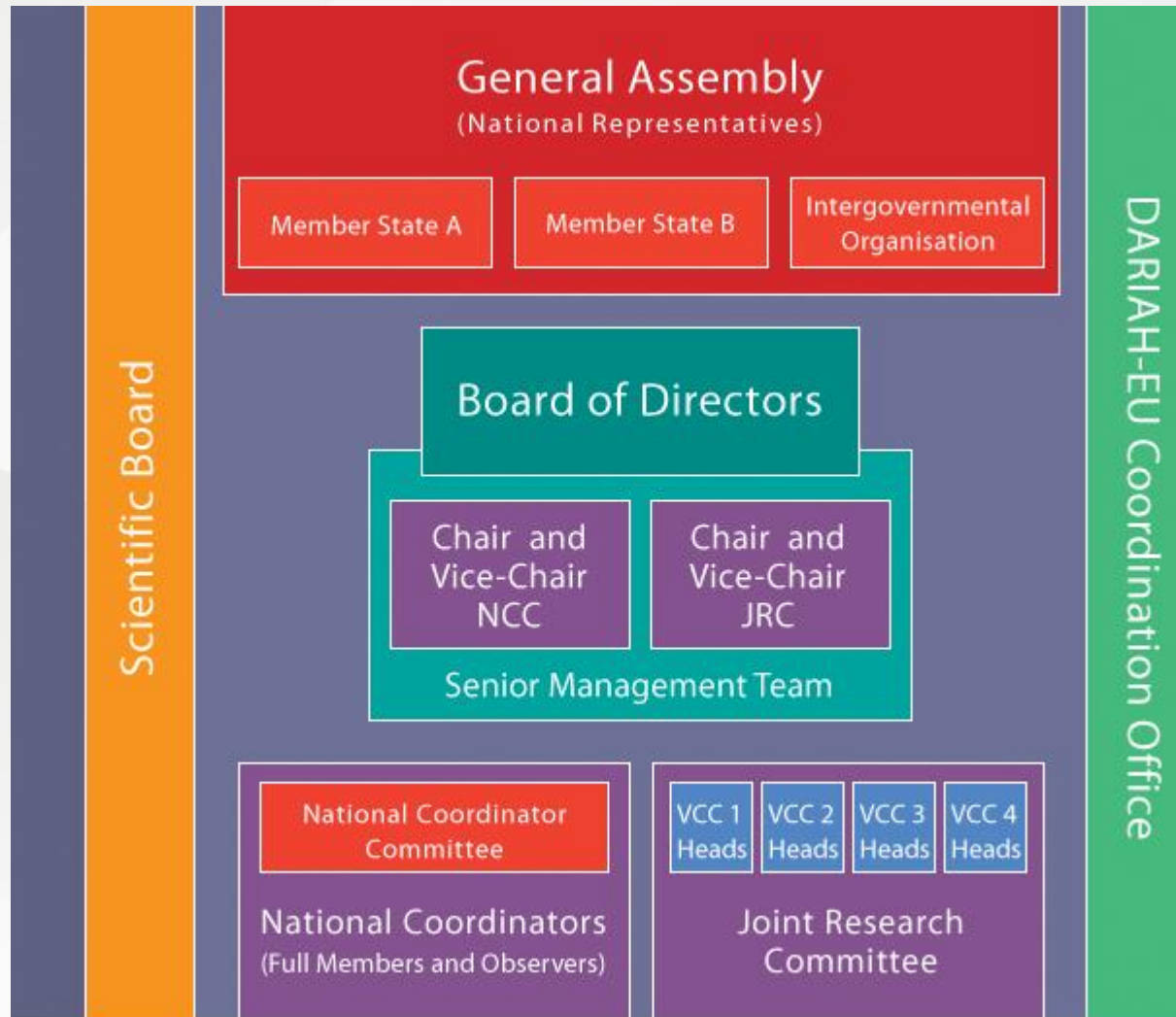
# A RI for DCCH : Dariah?

- **Research infrastructures (RI)** are facilities, resources (eg. collections, archives or scientific data) and services that are used by the research communities to conduct research and foster innovation in their fields.
- Cross **European** research infrastructure
- Enhance and support **digitally-enabled research** and teaching across the humanities and arts.
- Develop, maintain and operate an **e-infrastructure** in support of ICT-based research practices
- **Bring together** individual state-of-the-art digital Arts and Humanities activities across Europe.
- **Preserve, provide access to and disseminate** collaborative humanities research and ensure that **best practices, methodological and technical standards** are followed.

# Dariah-EU ERIC

- **2006** : Roadmap European Strategy Forum for Research Infrastructures (ESFRI) - financial support from Europe by project contributions
- **2014** : Founding of the DARIAH European Research Infrastructure Consortium (ERIC) – financial support by Member countries
- **Founding members** : Austria, **Belgium**, Croatia, Cyprus, Denmark, France (**host country**), Germany, Greece, Ireland, Italy, Luxembourg, Malta, The Netherlands, Serbia and Slovenia.

# Dariah EU : bodies / structure



# Organisation Dariah-EU

## Virtual Competence Centers (VCC)

- **VCC 1 : E-infrastructure**

Create VREs : Computing facilities, repositories, tools, development, connectivity.

- **VCC 2 : Research and Education**

Encourage researchers to use the e-infrastructures and VREs for humanities research and dissemination.

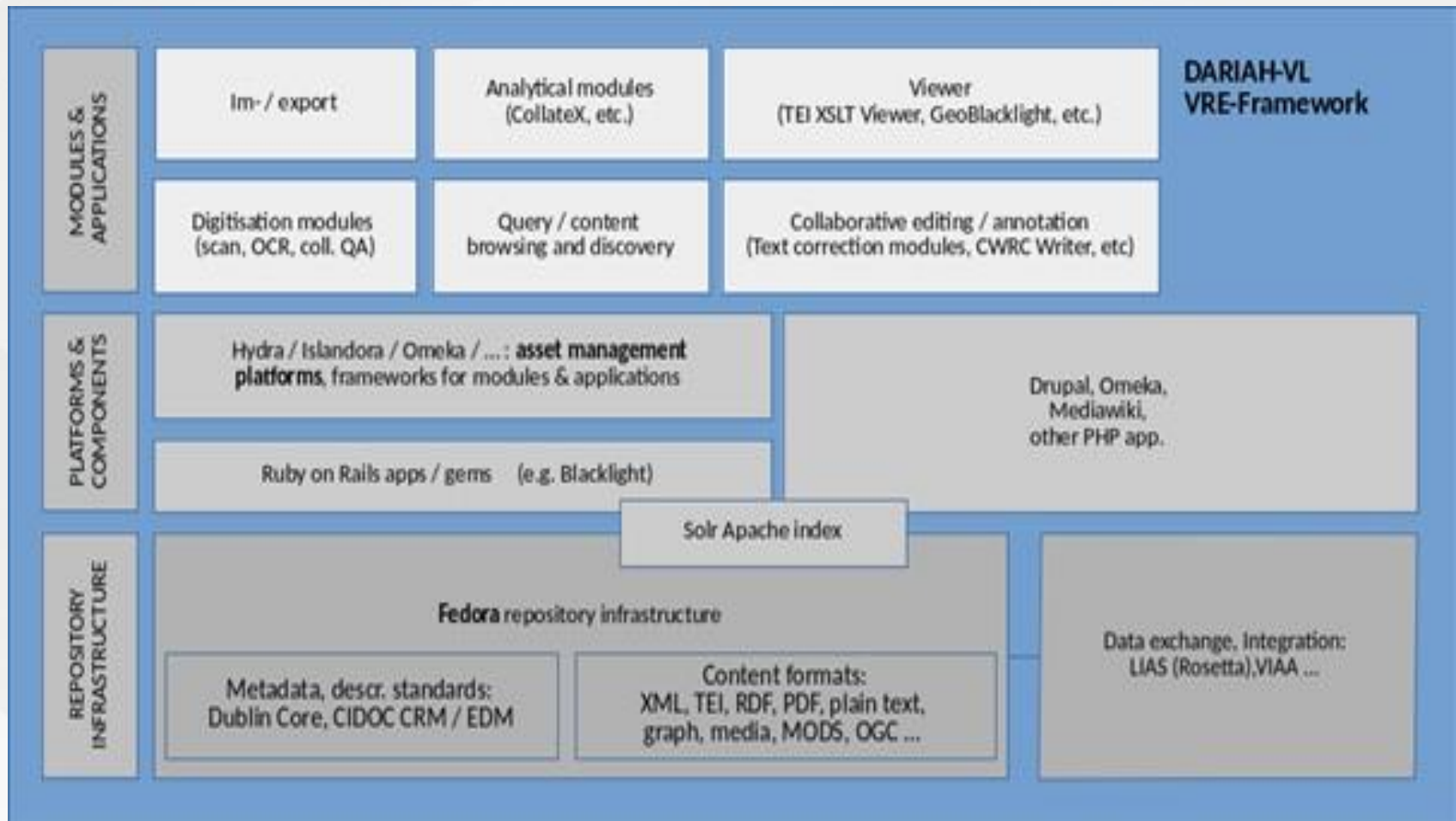
- **VCC 3 : Scholarly Content Management**

Defining standards and best practice guidelines.

- **VCC 4 : Advocacy**

Link with other projects and infrastructures.

# Dariah VRE Example (Dariah-VL)



# A RI for DCCH : Bamboo ?

- **Research infrastructures (RI)** are facilities, resources (eg. collections, archives or scientific data) and services that are used by the research communities to conduct research and foster innovation in their fields.
- Cross **American** research infrastructure project
- Enhance and support **digitally-enabled research** and teaching across the humanities and arts.
- Develop, maintain and operate an **e-infrastructure** in support of ICT-based research practices
- **Bring together** individual state-of-the-art digital Arts and Humanities activities across Europe.
- **Preserve, provide access to and disseminate** collaborative humanities research and ensure that **best practices, methodological and technical standards** are followed.

# Bamboo - history

- 2007 : Bamboo proposal
- 2008 – 2009 : Bamboo Planning Project
- 2010 - 2012 : Bamboo Implementation Phase
- 2013 : new founding proposal rejected – the end
  
- Financial support : Mellon Foundation + in kind contributions members
  
- **Founding members** : University of Chicago, UC Berkeley and other institutions (USA, UK, Australia)



# Some lessons learned

- “Scholars” don’t speak the same language as IT Staf and librarians (eg. “Services oriented”, wiki discussions, mistrust). Failed to connect to each other. Hypothetical scholarly use case
- Lack of strong governance, change of management
- Sustainability – only when there is a value proposition
- Demonstrator projects needed (too much investment in IAM)
- Clear vision. Bamboo stands for ...
- Distributed VREs not compatible with Bamboo standards
- Some strong services and tools services still supported (IAM, collaborative tools, APIs for data sharing)

# And what about Citizen Science?

- Speak the same language as the “Citizen”
- Strong governance, use existing Research Infrastructure to embed supported services
- Sustainability – only when there is a value proposition
- Demonstrator projects needed (Genealogy?)
- Reuse existing tools (IAM – Google, facebook accounts?, collaborative tools, APIs for data sharing)
  
- Contact : [chris.delooof\[a\]belspo.be](mailto:chris.delooof@belspo.be)